

# My Ole' Canoe...and RayCrete®

By Bob Heltman ([bobh@leadingedgepands.com](mailto:bobh@leadingedgepands.com)) 2-'03

It is almost embarrassing. That faded old once-red canoe has always been just left outside in the weather. It sits most of the year, summer & winter, upside down on 2 sawhorses. I forget how old it is, early fiberglass and at least 15 years or more. We didn't even use it during all of 2002.

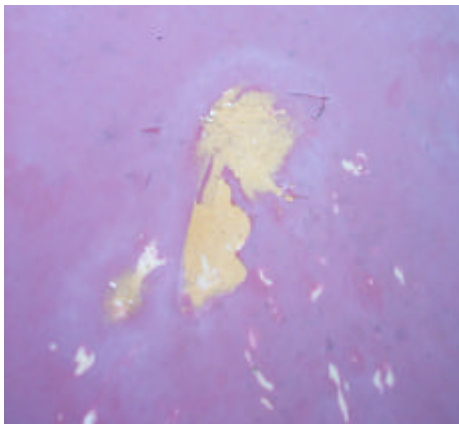
About 8 years ago, or maybe 10, I moved the seats to different and lower positions for stability and load balance between my wife and myself. This left 12 holes (3 per side for 2 seats) to fill. I used various fillers but nothing seemed to stay until I used RayCrete about 3 years ago. It has remained in place.



I also rebuilt along the gravel-scuffed keel at least twice with RayCrete, and filled some areas where the gel coat had cracked off. When I took these pictures (2-'03) I noticed that the gel coat needs more RayCrete-replacing here and

there. One of these days...

The prow and rear keel areas took the most pounding and grinding. They could use RayCreteing again now. I never painted or gel



coated over the RayCrete, yet it has withstood beating sun, driving rain, sitting snow, and icing up



and thawing out when not in the lake and going over fallen trees, weeds, and smacking into bank rocks and gravel.

If I was on a trip I'd pack some of the small 1.2 ounce Patch-Paks® of RayCrete for far afield repairs. I could even patch a hole while the canoe was in the water by applying backpressure from inside with a big leaf or two under my foot over the RayCrete in the hole while it sufficiently cured...about half an hour. Or put a backpack on a plastic baggie over the RayCrete filling the hole, and keep on paddling!